

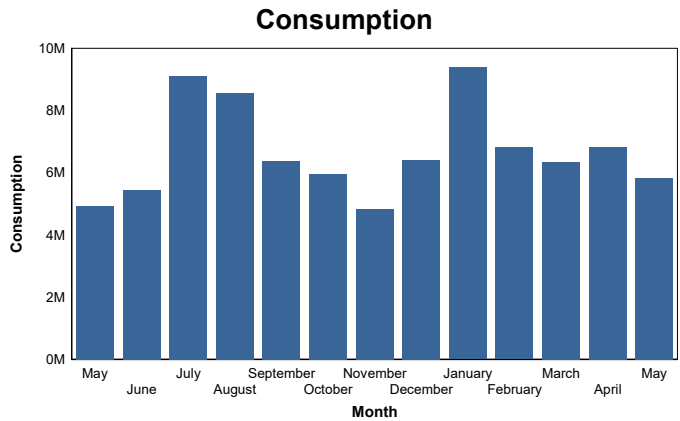
Lewes Board of Public Works Billing Revenues and Quantities

May 2018

Electric

	No. of Meters	Same Month Last Year	Revenue	Same Month Last Year	KWH Consumed	Same Month Last Year
Residential	3,270	3,261	\$ 260,265	\$ 244,722	1,948,700	1,631,657
Commercial	392	389	\$ 100,213	\$ 88,167	729,842	588,490
Industrial	34	33	\$ 289,166	\$ 270,358	2,812,560	2,432,553
City	21	21	\$ 12,753	\$ 11,774	99,901	85,938
BPW	40	40	\$ 29,461	\$ 23,678	258,730	194,086
Total	3,757	3,744	\$ 691,859	\$ 638,699	5,849,733	4,932,724

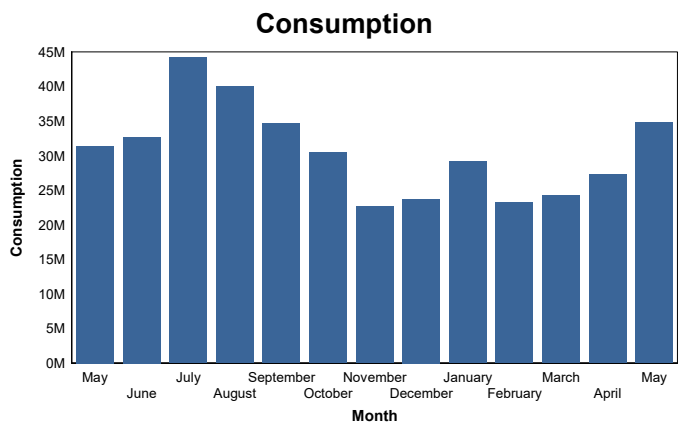
Financial Year	Month	KWH Consumed
2017 - 2018	May	4,932,724
	June	5,447,648
	July	9,107,925
	August	8,556,122
	September	6,374,467
	October	5,955,522
	November	4,847,766
	December	6,416,379
	January	9,384,559
	February	6,815,735
	March	6,343,160
	2018 - 2019	April
May		5,849,733



Water

	No. of Meters	Same Month Last Year	Revenue	Same Month Last Year	GAL Consumed	Same Month Last Year
Residential	2,976	2,949	\$ 71,467	\$ 63,574	9,233,115	8,288,448
Commercial	144	140	\$ 15,949	\$ 13,375	5,411,700	4,557,900
Industrial	33	32	\$ 48,487	\$ 41,438	20,016,000	18,381,300
City	13	13	\$ 443	\$ 502	88,600	123,300
BPW	4	4	\$ 177	\$ 164	28,500	23,500
Total	3,170	3,138	\$ 136,523	\$ 119,054	34,777,915	31,374,448

Financial Year	Month	GAL Consumed
2017 - 2018	May	31,374,448
	June	32,716,533
	July	44,247,097
	August	39,997,898
	September	34,684,442
	October	30,529,810
	November	22,679,709
	December	23,789,509
	January	29,123,219
	February	23,210,717
	March	24,255,882
	2018 - 2019	April
May		34,777,915



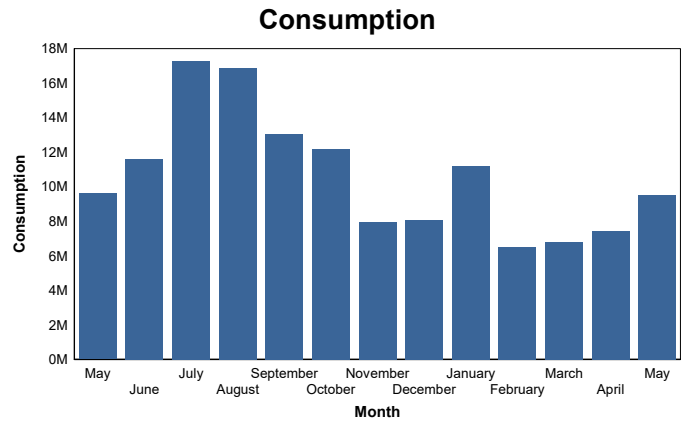
**Lewes Board of Public Works
Billing Revenues and Quantities**

May 2018

Sewage

	No. of Meters	Same Month Last Year	Revenue	Same Month Last Year	GAL Consumed	Same Month Last Year
Residential	2,682	2,666	\$ 180,556	\$ 167,682	5,780,793	5,240,341
Commercial	133	129	\$ 18,669	\$ 17,314	1,209,440	1,051,280
Industrial	28	27	\$ 26,118	\$ 29,663	2,460,960	3,208,640
City	13	13	\$ 1,303	\$ 1,462	71,440	99,040
BPW	3	3	\$ 341	\$ 337	10,400	10,000
Total	2,859	2,838	\$ 226,986	\$ 216,457	9,533,033	9,609,301

Financial Year	Month	GAL Consumed
2017 - 2018	May	9,609,301
	June	11,628,427
	July	17,275,258
	August	16,891,480
	September	13,068,201
	October	12,200,709
	November	7,980,789
	December	8,102,690
	January	11,193,908
	February	6,523,697
	March	6,823,668
	2018 - 2019	April
May		9,533,033



Storm Water

	No. of Meters	Same Month Last Year	Revenue	Same Month Last Year
Residential	2,744	2,734	\$ 13,725	\$ 13,680
Commercial	140	140	\$ 1,400	\$ 1,400
Industrial	28	28	\$ 580	\$ 580
City	13	13	\$ 130	\$ 130
BPW	6	6	\$ 70	\$ 70
Total	2,931	2,921	\$ 15,905	\$ 15,860

**Lewes Board of Public Works
Billing Revenues and Quantities**

May 2018

Irrigation

	No. of Meters	Same Month Last Year	Revenue	Same Month Last Year	GAL Consumed	Same Month Last Year
Residential	461	446	\$ 6,359	\$ 12,586	1,885,508	4,212,400
Commercial	28	28	\$ 330	\$ 418	83,800	131,400
Industrial	4	4	\$ 168	\$ 317	64,000	139,300
City	5	5	\$ 220	\$ 167	74,300	53,000
Total	498	483	\$ 7,077	\$ 13,488	2,107,608	4,536,100

Financial Year	Month	GAL Consumed
2017 - 2018	May	4,536,100
	June	4,611,500
	July	8,249,500
	August	7,585,500
	September	4,867,900
	October	4,306,100
	November	1,376,200
	December	137,504
	January	77,510
	February	81,900
	March	11,800
	2018 - 2019	April
May		2,107,608

